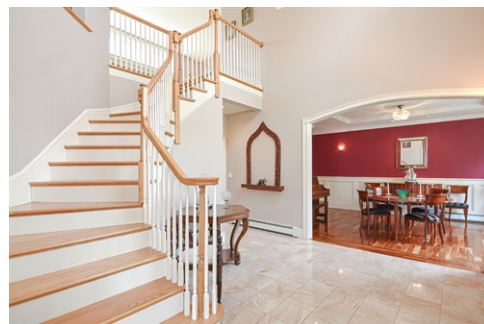


Custom 10 room Contemporary Colonial!



\$ 1,995,000



9 Argyle Avenue, Wellesley, MA 02482

- » Beds: 4 | Baths: 4 Full, 1 Half
- » MLS #: 72822068
- » Single Family | 4,200 ft² | Lot: 12,500 ft²
- » More Info: 9Argyle.IsForSale.com



Kathy Kelley
(781) 710-1035 (Direct)
(781) 237-8787 (Office)
kathy@BHHSbaystatehomes.com
<http://wellesleyfinehomes.com>

**BERKSHIRE
HATHAWAY**
HOMESERVICES
TOWN AND COUNTRY
REAL ESTATE

Berkshire Hathaway HomeServices
310 Washington Street
Wellesley, MA 02481
(781) 237-8787

Remarks

The quality of this custom built home is evident at every turn: from the 2-story marble foyer to the rich Brazilian Cherry floors. Soaring first floor ceilings. Elegant archways. Central great room flooded with light from the wall of Pella windows. Visitors will appreciate the hard-to-find first floor bedroom with bath. The cook's kitchen features Wolf 6-burner range, double wall ovens, two sinks and two dishwashers. Primary bedroom with luxurious bath and river stone shower. Every family bedroom is en suite. You can decide how to use the massive 24' second floor bonus room: office? fifth bedroom? library? And the large mudroom with cubbies and closet holds back the kids clutter. Fully developed lower level with approximately 800 sq ft including entertainment, game and gym spaces as well as a wet bar snack center and plumbed for future bath. Highly energy efficient with multiple heating and cooling zones. You will be wowed from the moment you enter. Matterport tour available.

